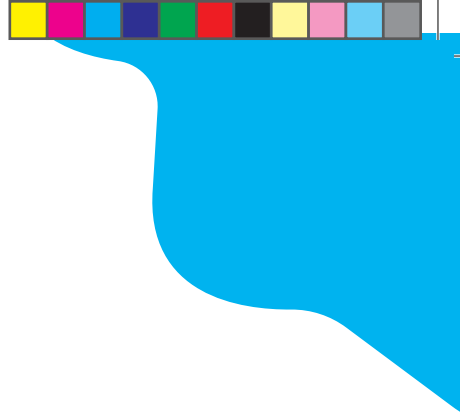




Department  
for Education



<FF\_PA\_Title > <ff\_PA\_firstname> <FF\_PA\_surname>  
<FF\_AddressLine1>  
<FF\_AddressLine2>  
<FF\_AddressLine3>  
<FF\_AddressLine4>  
<FF\_AddressLine5>  
<FF\_Postcode>

Reference No:  
<PASerial> <CKLPA>



## <FF\_PA\_Firstname> - you are invited to the next stage of the Five to Twelve study!

Dear <ff\_PA\_firstname>,

Thank you for taking part in the Five to Twelve study last year! We are getting back in touch now that <FF\_CM\_Firstname> is a year older. We really appreciate the time you and your family gave to the study last year. Each family in the study is unique. As we are looking at experiences that happen over time, we will not be able to replace your spot in Five to Twelve, so your continued support is very important. As a thank you for your continued help, please find a ready-to-use **£10 gift card enclosed** for your family. <FSMVouchText1>

### You are making a difference!

Your family was one of over 8,000 families who took part in Five to Twelve last year. The responses we received last year are already helping us understand the lives of children at the start of their education. You are now invited to take part in the second year of this important study. It is vital that we hear from you again, to make sure that your perspective and <FF\_CM\_Firstname>'s experiences of their school life are represented.

### Steps to take part

This year you can complete your own short questionnaire online.

1. Go to the survey website [survey.natcen.ac.uk/FiveToTwelveY2](https://survey.natcen.ac.uk/FiveToTwelveY2) or **scan the QR code** with your mobile phone
2. Enter your personal access code <AccessCodePA>
3. Complete the survey <FSMVouchText2>

Thank you! There is more information about the study in the leaflet enclosed. If you have any questions or do not want to take part, you can contact us by emailing [FiveToTwelve@natcen.ac.uk](mailto:FiveToTwelve@natcen.ac.uk) or calling Freephone **0800 652 4568**.

Yours sincerely,

**Michele Weatherburn**  
Department for Education

**Martin Wood**  
National Centre for Social Research

# Frequently Asked Questions

## How was I chosen for this study?



Your child was selected at random from the Department for Education's National Pupil Database to take part in the study last year when they were 5 or 6 years old. One of our interviewers visited your home last year to conduct the first interview. We are getting back in touch with you to find out more about your child's experiences a year on. Taking part is completely voluntary. You can change your mind and withdraw from the study at any time and you do not have to provide a reason.

## What does taking part involve?

This time, we are inviting you to answer your questions online using your own **personal** access code (listed on the front page of this letter). You can use a computer, tablet or your smartphone.

It will take between 15 and 30 minutes in most cases. Your answers will be saved as you go along – so you can take a break and come back if you need to.

If you are not able to participate online, don't worry – we may call you to invite you to take part over the phone. You can also call us to let us know if you prefer a phone questionnaire on **0800 652 4568**.

## What will happen to the information I give?

All information provided by you will be strictly confidential, stored securely and protected by UK data protection legislation. The answers you give will help researchers and policy makers understand children's development and family life. The information will be used to make decisions about education and family support. The study findings will be anonymised and nothing we publish will identify you or your family. You can read the study's Privacy Notice here [fivetotwelve.org.uk/privacy-notice](https://fivetotwelve.org.uk/privacy-notice).

## Who is carrying out the study?

This study is being carried out by the National Centre for Social Research, the largest independent social research organisation in Britain, in collaboration with the National Children's Bureau (NCB) and the National Foundation for Educational Research (NFER). The study is funded by the Department for Education.

## Where can I find out more?

For more information, please see the enclosed leaflet or visit [fivetotwelve.org.uk](https://fivetotwelve.org.uk). If you would like to talk to someone about the study or if you do not wish to take part, please contact us at [FiveToTwelve@natcen.ac.uk](mailto:FiveToTwelve@natcen.ac.uk) or call us on **0800 652 4568**. When contacting us please include your reference number on the top of this letter.

16\_P17959 EOPS-B Year 2 PA Advance letter