



Department
for Education

**Five
to Twelve**

Data Linkage information



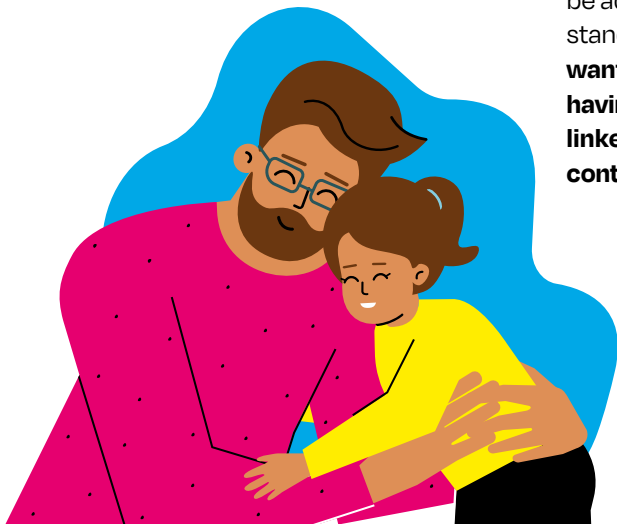
Government departments and agencies collect information about all of us to help them provide the services we need. This information is stored in administrative records.

Why is data linkage helpful?

Adding information from administrative data to your survey answers helps the Department for Education and researchers build a more complete picture of family life, so we can understand the most important factors that affect children's development during their early education. **Importantly, linked data is always anonymised and only ever used by researchers.**

Education records

The Department for Education (DfE) already collects information about what children's services are being used and how children are progressing at school. They also hold information about your educational background, such as exam results and participation in further education. They will combine this information about you and your child with data collected in this study to build a much rounder picture of families' lives. As the Five to Twelve study is commissioned by the DfE, your and your child's education records will be added to your survey answers as a standard part of the study. **If you do not want this to happen you can opt out of having your educational records data linked, by letting us know using the contact details at the end of this leaflet.**



Health records

Children's health is also important for understanding what affects their wellbeing and how they get on in school. So, we will ask your permission to add information about your child's health from their NHS records. Similarly, it is very helpful for us to know about your health. **We will also ask for your permission to add information about your health from your NHS records.** These records include information about admissions or attendances at hospital, visits to a GP or other health professional (e.g. midwife), specific conditions and prescriptions given. You do not have to agree to this, and if you choose not to, you can still stay in the study.

Your decision about whether or not to allow us to add information from your and your child's records will not affect your or your child's services, rights, treatment or any health insurance. It will not affect your benefits or tax.



Who will use the information?

The combined survey and administrative information will be used for research purposes only and will only be accessed by researchers. Like your study responses, this information will be anonymised and made available securely by DfE to researchers for non-commercial research and statistics. Personal data identifying you or your child are never given to these researchers.

The anonymised information will be made available securely by DfE to researchers via the UK Data Service (UKDS), Office for National Statistics Secure Research Service (ONS SRS) or a similar trusted research repository. Access to the data will only be granted after a detailed and rigorous application is made to the Department for Education. This is to make sure this information is used responsibly.

All information is treated in the strictest confidence in accordance with the Data Protection Act and the General Data Protection Regulation (GDPR). The privacy notice explains how we keep your information safe and can be found here: www.natcen.ac.uk/taking-part/studies-in-field/fivetotwelve/privacy-notice.

What if you change your mind?

You can change your mind about adding information from these records and withdraw any of your permissions at any time, without giving us a reason, for the duration of the study. If you change your mind about adding information, any data already collected will continue to be processed unless you explicitly request that we delete it.

Contact details

For questions about Five to Twelve data linkage, or to withdraw your permissions, contact the team by emailing FiveToTwelve@natcen.ac.uk or calling Freephone **0800 652 4568**.

