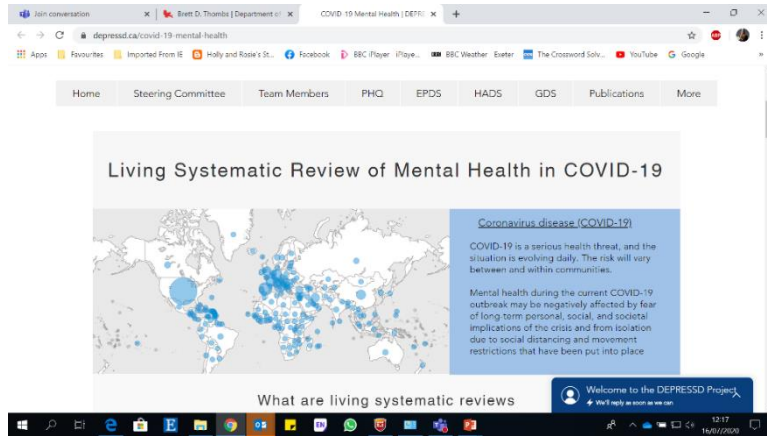


Mixing the methods to dig deeper

Society Watch 2021 Report Launch

Tamsin Ford, Professor of Child and Adolescent Psychiatry
@Tamsin_J_Ford

Data gap for under 16s and high signal:noise



- Review 1 – changes in mental health (2/3 pre to post cf within pandemic)
- Review 2 – factors associated with changes
- Review 3 intervention studies

- 48741 abstracts and titles screened
- 403 trials registrations
- Eligible / extracted studies (on CYP)

Review 1: 581: 79 (4)

Review 2: 43 42

Review 3: 83 63 (0)

National child mental health surveys

Year	1999	2000	2001	2002	2003	2004	2005	2006	2007		2017	2018	2016	2020	2021
1999	Base-line		S D Q	FU											
2004						Base-line	S D Q	S D Q	FU						
2017											Base-line			S D Q	S D Q



Commissioning department and data owner.



Agreed the survey content, respondent materials, fieldwork, processing the data, report writing and data archiving.



Sample design, questionnaire programming, fieldwork, weighting of the results and report writing.

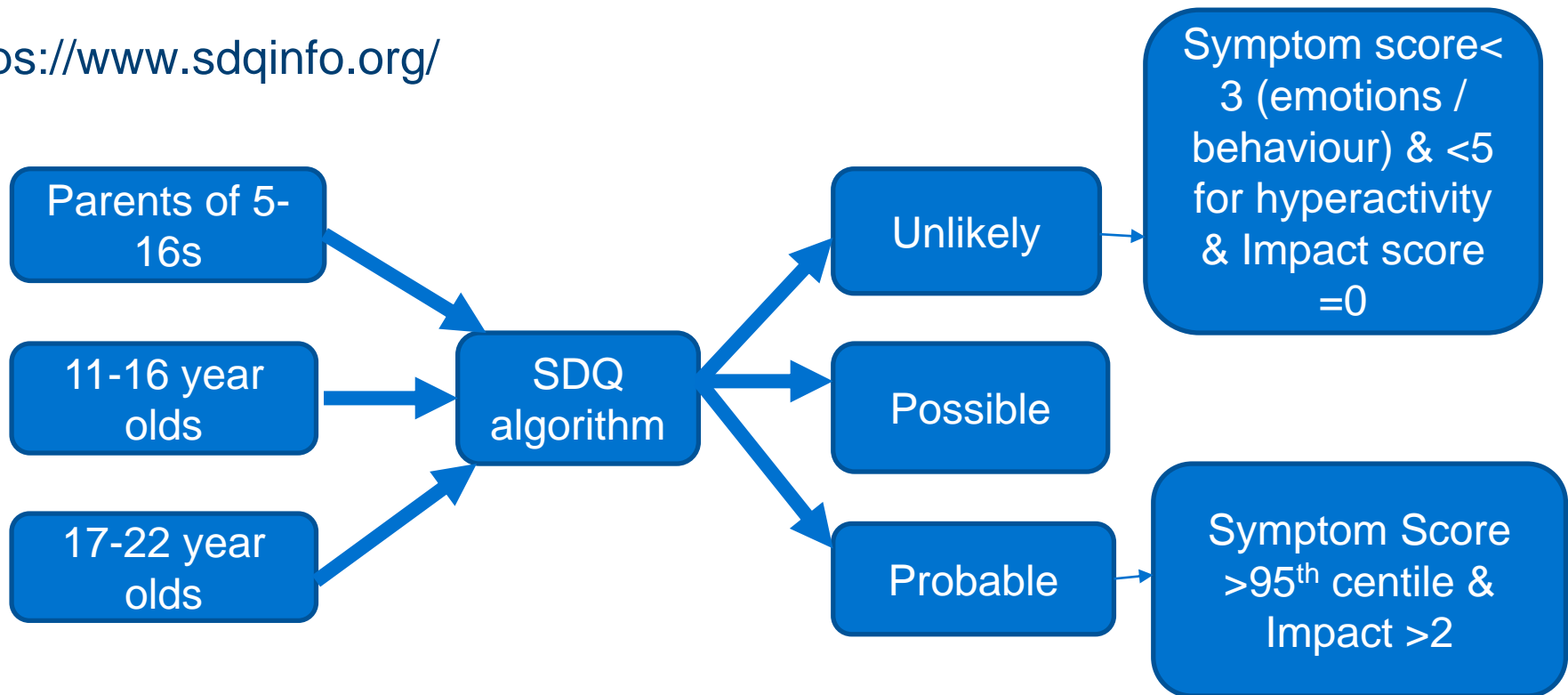


INSTITUTE OF PSYCHIATRY,
PSYCHOLOGY &
NEUROSCIENCE



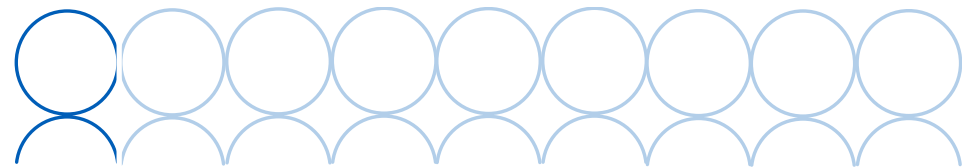
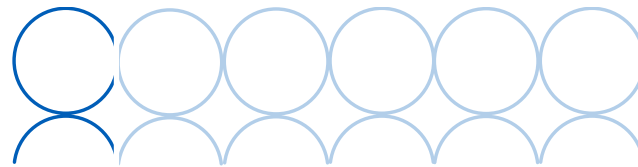
Probable Mental Disorders in children and young people

<https://www.sdqinfo.org/>



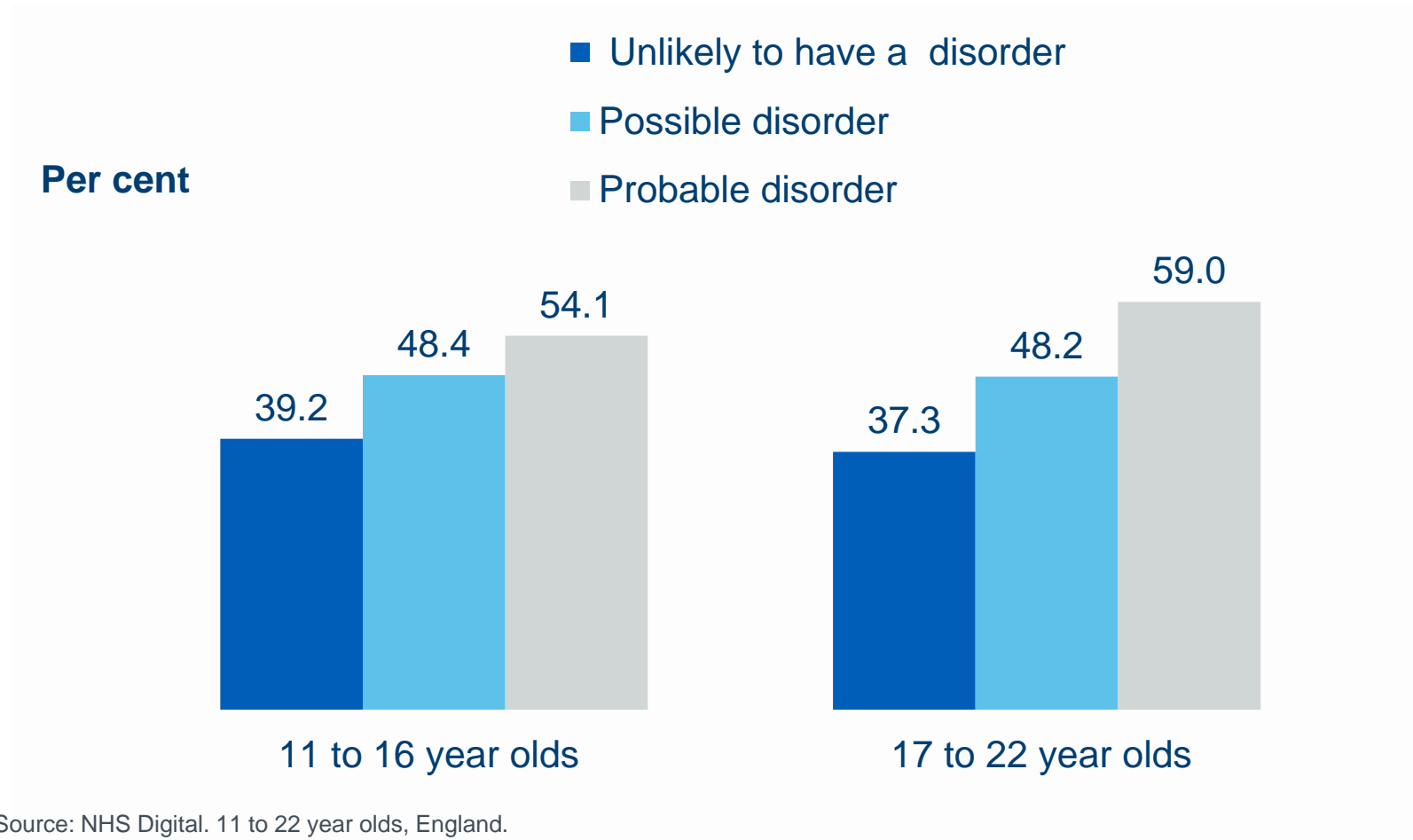
Rates of probable mental disorder in 5 to 16 year olds in England have increased since 2017

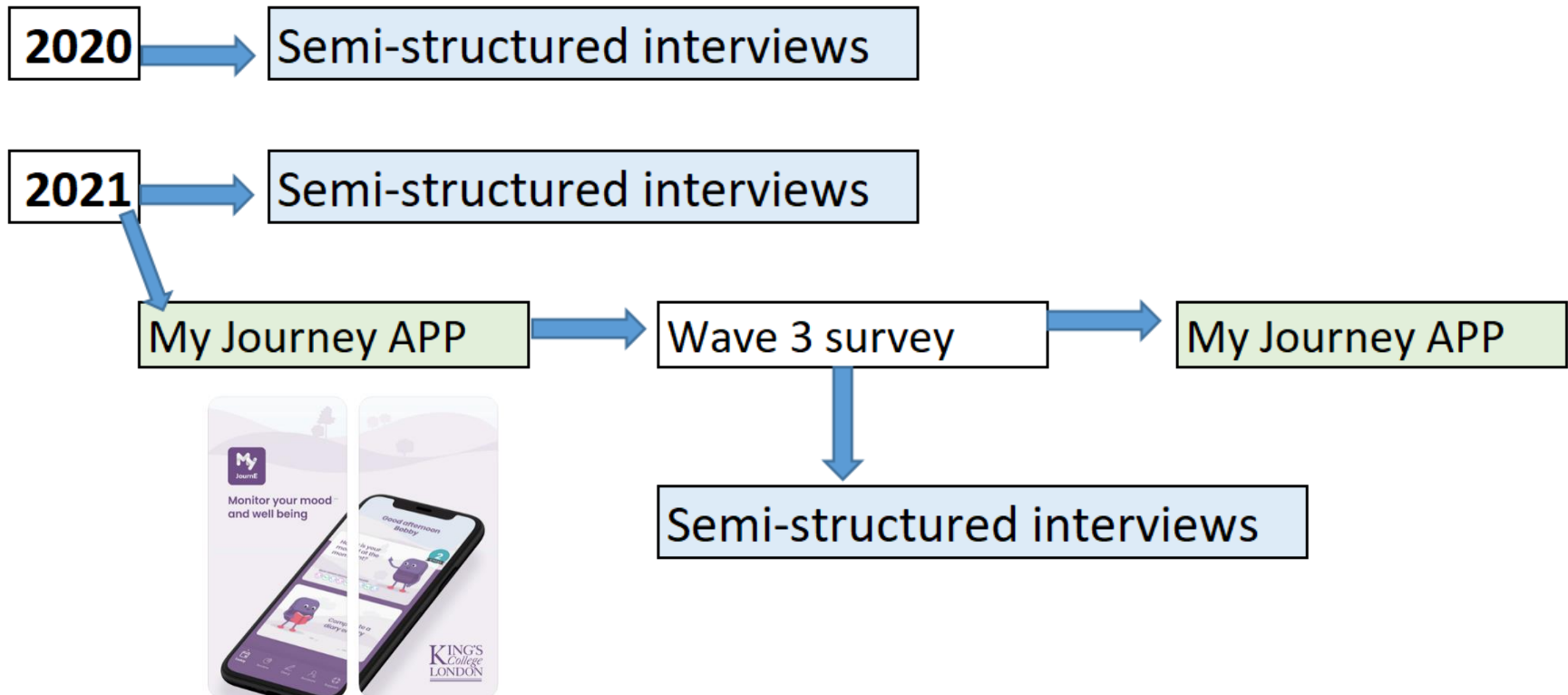
In 2020, **one in six** (16.0%) children aged 5 to 16 had a probable mental disorder.



Source: NHS Digital. 5 to 16 year olds, England.

Two in five children (42.8%) and young people (43.1%) (11 to 22 year olds) felt that lockdown had made their life worse







UK Research
and Innovation



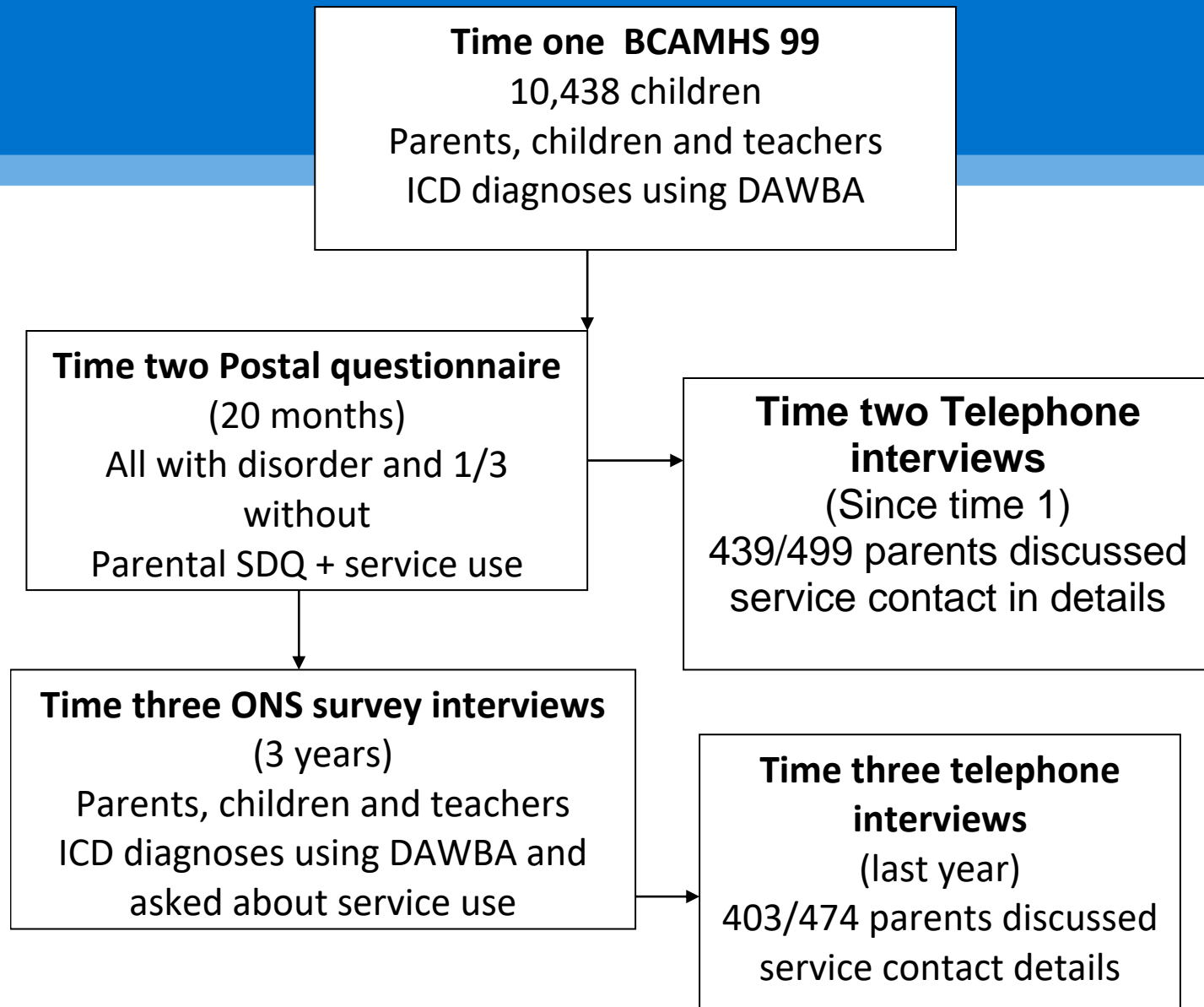
Aims of the interview studies

To explore the experiences of children, young people and parents of lockdown (**Wave 1**)

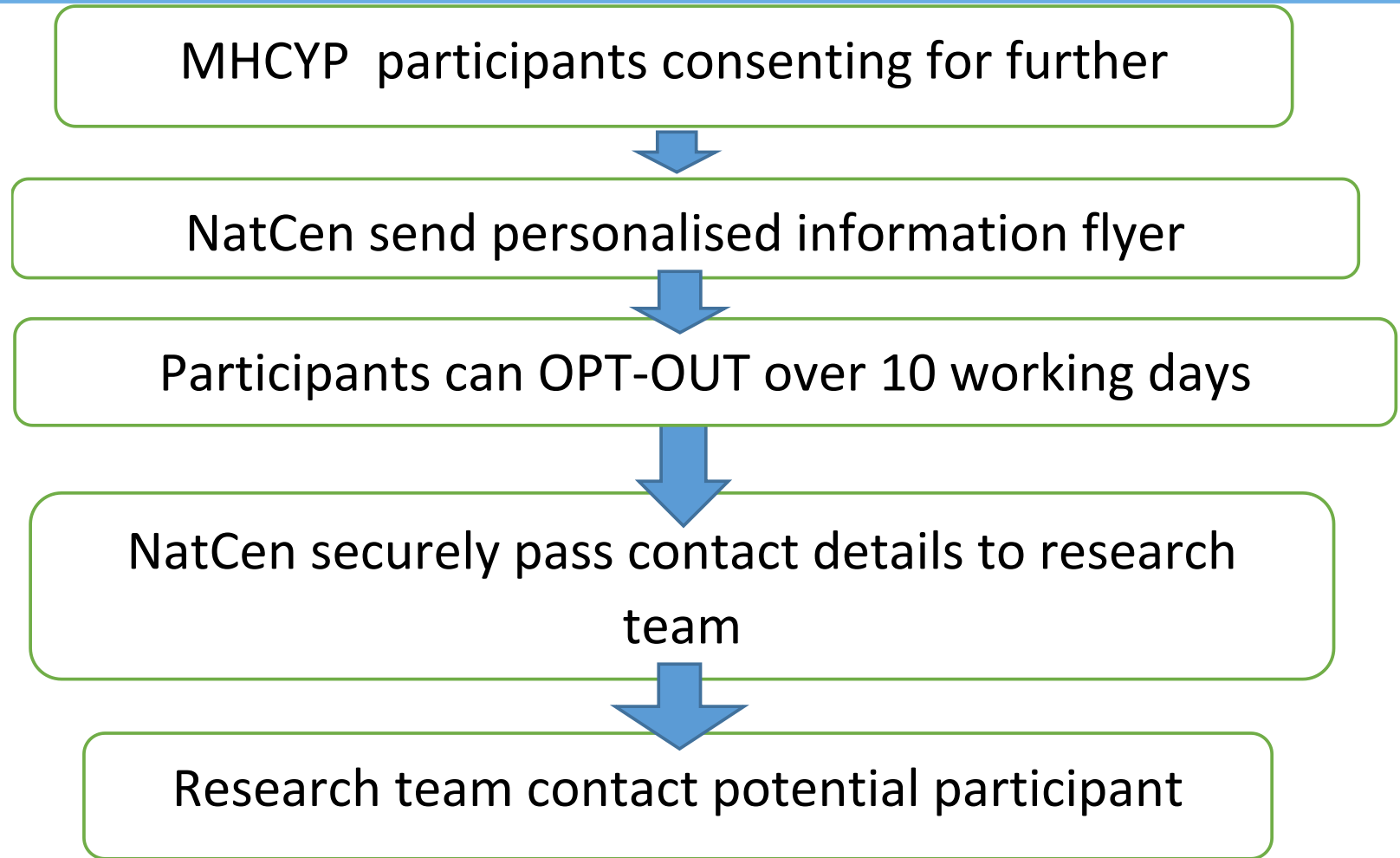
To examine mental health related service contacts in children and young people, both pre-pandemic and during the pandemic, and to explore the barriers and facilitators to seeking and receiving help (**Wave 1**)

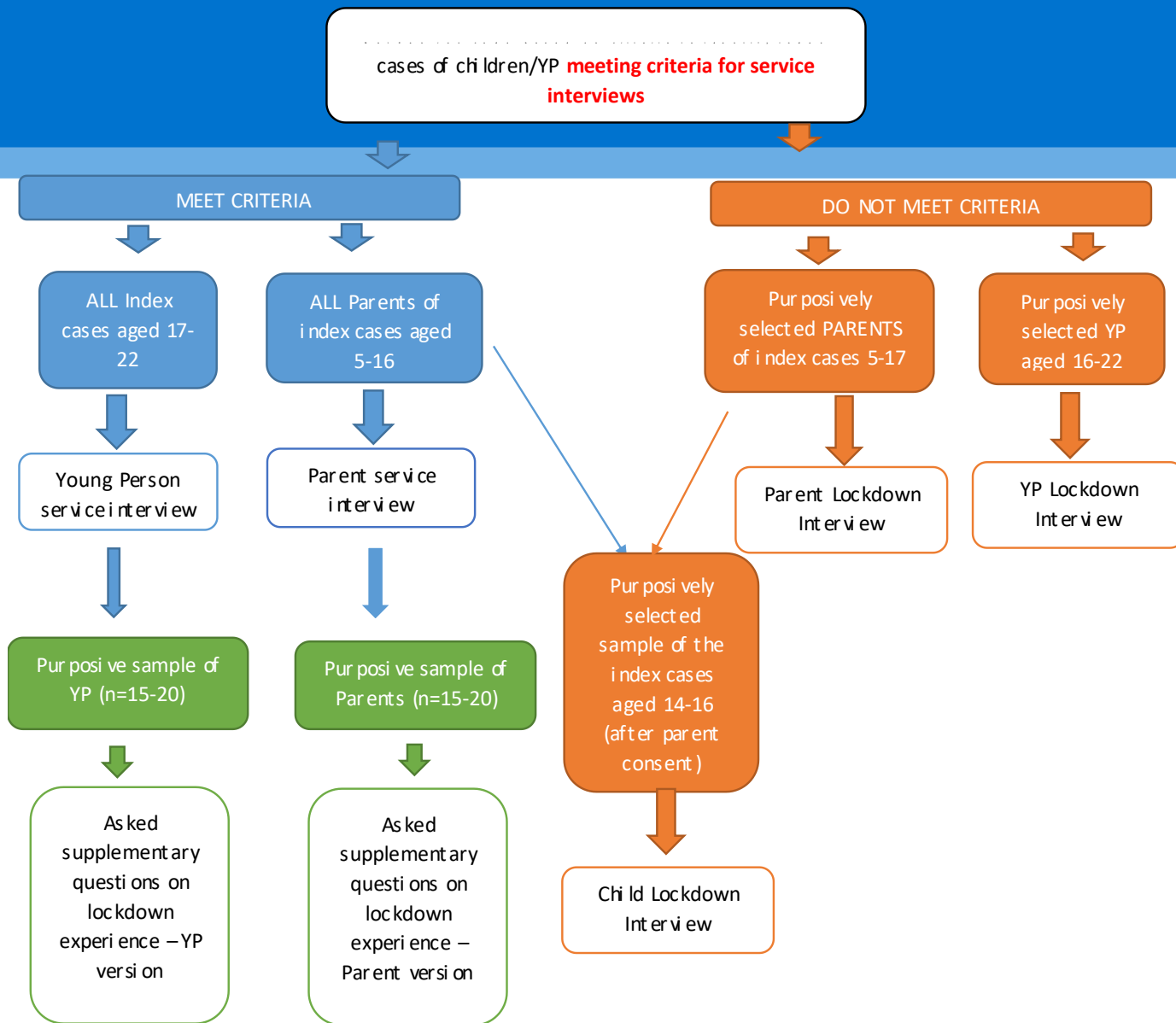
To quantify eating disorders given the increased number and severity of presentations (**Wave 2**)

To understand the experience of children with SEND as schools re-open (**Wave 2**)



Process for contacting





Nice to meet you
Emily

How is your
mood at the
moment?

Most recent recorded moods



Complete a
diary entry



Today



Review



Diary



Account



Support

You feel



OK

Who are you with at the moment?

With other people I don't know

Where are you at the moment?

Travelling

Where are you travelling to?

To School

What are you up to at the moment?

School/Learning


What sort of school / learning?


School break

How appropriate is this word today?

Scared

Hostile

< 



On the 18 March 2020 something unpleasant to do with school happened

I got bullied at school

Impact on my mood

QUITE A BIT

 Delete this diary entry from my app but allow researchers to still access the entry

 Delete this diary entry completely

× Cancel

Month by month

All time view

March 2020

Who

Where

What

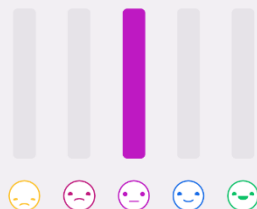
Alone

2



With school friends

1



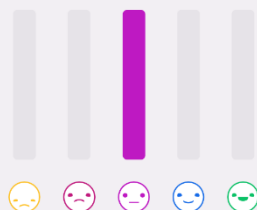
With a partner

2



With other people I don't know

1



Today



Review



Diary



Account



Support

YOUNGMINDS

Youngminds.org.uk

020 7089 5050

VISIT SITE

ChildLine

0800 1111

Childline.org.uk

0800 1111

VISIT SITE



Today



Review



Diary



Account



Support



Welcome to the MyJournE Survey!

This survey will take no more than 15-minutes to complete.

We are interested in finding out more about our students' mental health, wellbeing and school environment. This is part of an ongoing effort to improve the support and services the school provides its students in developing resilient and healthy young people.

No individual responses will be identifiable by the school. Kings College London will provide anonymous year group feedback report to the school.



UNIVERSITY OF
CAMBRIDGE



Commissioning department and data owner.



Agreed the survey content, respondent materials, fieldwork, processing the data, report writing and data archiving.



Sample design, questionnaire programming, fieldwork, weighting of the results and report writing.



reshape@medschl.cam.ac.uk



The Follow-On research team



Professor Tamsin Ford



Dr Tamsin Newlove-Delgado



Dr Johnny Downs



Lauren Cross



Franki Mathews