

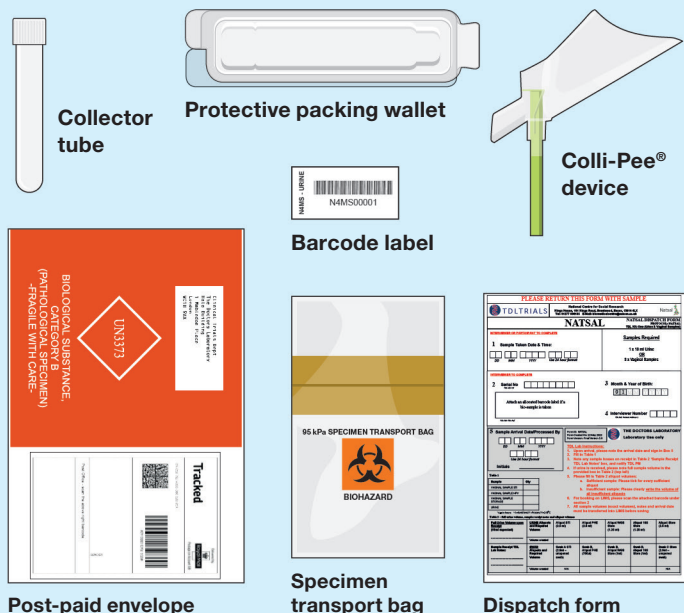
# Urine sample collection: instructions for collection after interview

Please read these instructions first,  
slowly and carefully, the whole way  
through **before** collecting your sample.

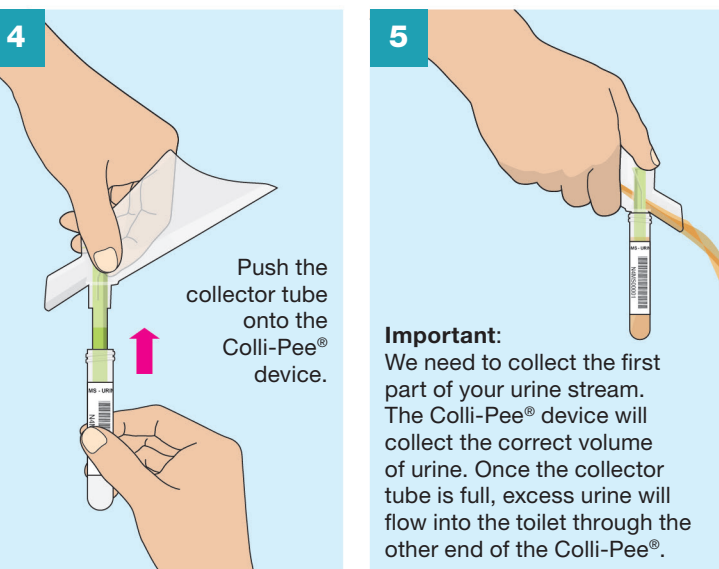
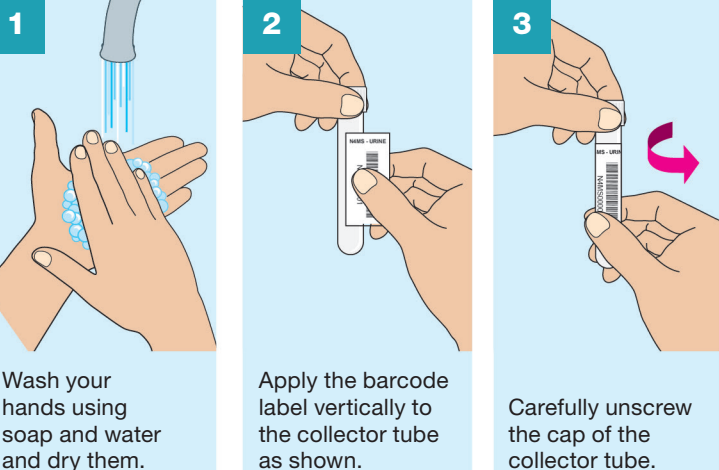
Natsal



## Your sample collection pack contains

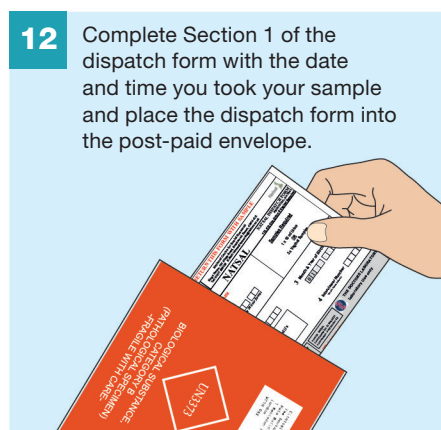
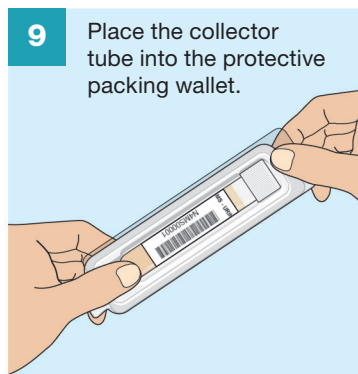
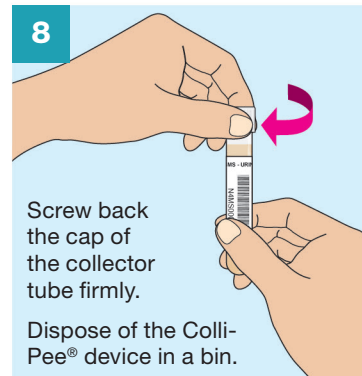
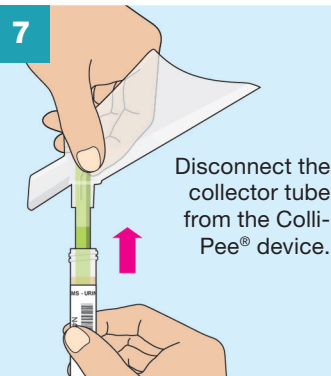
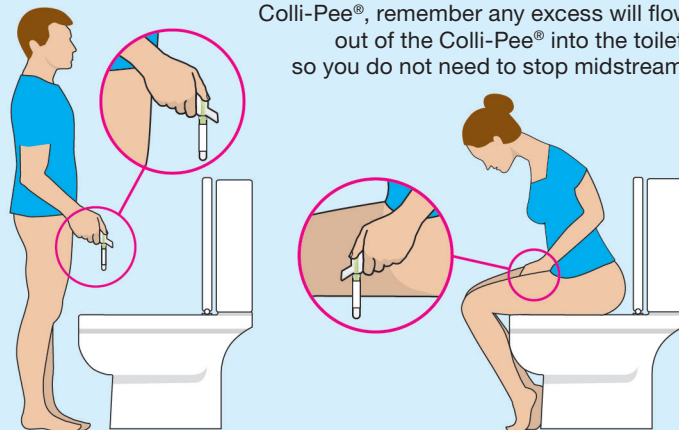


## Please follow steps 1-14



**6** Find a comfortable position, with the Colli-Pee® device in one hand, hold it as shown, close to your body.

Proceed to start passing urine into the Colli-Pee®, remember any excess will flow out of the Colli-Pee® into the toilet, so you do not need to stop midstream.



Please turn over for further instructions

13

Seal the specimen transport bag and place it into the post-paid envelope. You can now seal the envelope.



14

Post the envelope back to us as soon as possible using any Royal Mail post box.

